



# Berea-Midpark High School

165 E. Bagley Road • Berea, Ohio 44017

216-898-8900

[berea.k12.oh.us](http://berea.k12.oh.us)

Vincenzo Ruggiero, Principal

Vol. 2

## November 2018 Newsletter

### COMING EVENTS

Friday-Saturday, November 16 and 17	BMHS Fall Play "Pride and Prejudice" 7:00 BMHS Auditorium, see pg.3
Monday, November 19	Fall Sports Awards 6:30, BMHS Auditorium
Tuesday, November 20	PRIDE hosts "Mix It Up Day" all day for students at BMHS
	Parochial School Student Visitation
Wednesday to Friday, November 21-23	PTSA Principal's Forum and Meeting 6:00 P. M. Media Center
Tuesday, November 27	NO SCHOOL Thanksgiving Break, school resumes Monday, Nov. 26th
Friday, November 30	World Language Edgar Rene Concert
	Ninth Grade Vision Screening all day, Auditorium
Monday-Friday, December 3 to 11	NHS hosts "Dodge Ball Night" 7-10 P.M. Sports Center, see pg. 5
Tuesday, December 4	End of Course Exam Retakes and Make-Ups
Saturday, December 8	AFS Christmas Social 6:30 P.M. Cafeteria
Monday, December 10	ACT @ 8:00 A.M.
	CCP Parent/Student Meeting 7:00 P.M. BMHS Auditorium
Tuesday, December 11	Performing Arts Boosters Meeting 7:00 P.M. Choir Room
	Athletic Boosters Meeting 7:00 P.M. Titans Room
	OML after school in Math Classrooms
Wednesday, December 12	Winter Orchestra Concert 7:00 P.M. BMHS Auditorium
Thursday, December 13	PRIDE "Interfaith Celebration" 2:30 BMHS Media Center
	Winter Band Concert 7:00 P.M. BMHS Auditorium
Tuesday, December 18	Orchestra Boosters Meeting 6:00 P.M. Cafeteria
	Winter Choir Concert 7:00 P.M. BMHS Auditorium
Wednesday—Friday, December 19, 20, 21	PTSA Meeting 7:00 P.M. Media Center
Monday-Friday, December 24 to January 4	Semester Finals, See Finals Schedule, Page 7, Modified Bell Schedule
Monday, January 7	Winter Break, No School Staff or Students
	School Resumes



## FROM THE PRINCIPAL

We wish each of our Titans families a **Happy Thanksgiving!** Celebrating this holiday of gratitude, we express our sincere appreciation of our local fire and police departments for their ongoing services of providing support, safety, and protection. In particular, School Resource Officer Fadil and Officer Bort & K-9 Officer Vader have been instrumental partners in the effective realization of such at Berea-Midpark High School. With their assistance, we have not only conducted safety drills and random drug dog searches (of book-bags and lockers), but we have also afforded helpful support for students and families dealing with unfortunate circumstances.



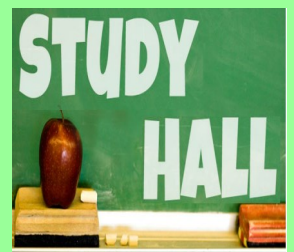
### Student & Staff PBIS Recognitions:

- From a proud BMHS Staff Member: "Our BMHS Team Andrews placed 3rd this year in this past weekend's Hyland Innovation Showdown. We had a great concept, ECO Paws, which is an idea for doggy waste composting. The link for the video on Youtube is <https://www.youtube.com/watch?v=JV7TjnRxGi4> Team members Jacob Andrews, Dawn Luong & Thai Truong (seniors) and Caden Dees (junior) spent many hours after school, weekends, and days off working on their concept. Two mentors from Hyland (Tomoko Sasinka & Tealla Gehlbach) guided the process and gave them input into their business concept. It was a pleasure to serve as teacher mentor, for this highly motivated team!" (Ms. Jane Darrow)
- From a gracious BMHS Colleague: "Hi Everyone... Sincere thanks to everyone for the many cards both here at work and mailed homes, kind words, emails and flowers sent on the passing of my mother-in-law last week. I appreciate your kindness and thoughtfulness. It is greatly appreciated."
- From an alum & thankful fellow educator: "Thank you for having our team at BMHS today. I truly appreciate you taking the time to personally provide a tour of the building and sharing the awesome things your teachers are doing. Please pass along my thanks to your staff. It is tough to stop and host guests in the middle of the day and we appreciate their willingness to do so. It was great to be home!!" (Mr. Michael Laub, Superintendent of Avon Schools)
- From an impressed & appreciative BMHS Education-Partner: "I would like to recognize Alex Smearman, Shane Luszczyński, Emily Murray, Maureen Bender, Niklas Lehtinen, Andrew Wilson, Matthew Yakimow, Caden Dees, Noah Zehe, Tabitha Burnett, Jacob Andrews and Julia Nofel. They visited our corporate office and discussed career opportunities with corporate staff members today-again, a very fine representation of Berea-Midpark High School. Perfect dress, attentive and participated in all discussions: I am very proud to have them at Parker. Berea-Midpark students are welcome any time." (Mr. Robert Griffin, Parker Hannifin Corp.)
- From a generous Community Partner: "It is with great honor and pleasure that (we) inform you that your students, Ashley Martincic and Serena Walker, have been accepted as a candidate team in the Leukemia & Lymphoma Society's 2019 Students of the Year campaign. Each student in Northern Ohio was nominated by our Board of Trustees, school administrator or staff member for their amazing leadership, passion to find a cure for blood cancers and involvement in the community."



### STUDENTS WHO WANT TO USE THE LIBRARY/MEDIA CENTER DURING STUDY HALLS:

Any student who wants to use the Library/Media Center during their study halls, must sign up **FIRST** following the directions below. If you do not sign up to use the Library, you will need to return to your study hall. Students are not permitted to have the study hall monitor simply write a pass to the Library. The student needs to: login to the BCSD webpage, select BMHS High School, then Library tab, select BMHS Study Hall Sign Ups on the left menu, sign in to your Google account and the calendar for the week will appear. Students should select the date and period they would like to use the Library. Find the day of the week and click on one of the numbered boxes which represent the period they want and place their name in that box that will appear. Be sure to **SAVE**. If there are no boxes available when a student wants to come that means all of the spots have been filled and the student must remain in their assigned study hall. The number of spots available for each period varies.



## PTSA REFLECTIONS PROGRAM

Reflections is a national art program sponsored by the National PTA and BMHS PTSA. Entries may include dance, film, literature, music, photography, and visual arts. All entries are due by December 4, 2018, to the PTSA mailbox in the Main Office along with a fully completed student entry form submitted with each entry. If it is not, the entry will be disqualified. Entry forms and official rules of the Reflections Program can be picked up in the Activities Office. If you have any questions, contact Becky Conroy at conroybecky@yahoo.com



## BCSD Parents:

Do you want to help TRANSFORM  
**Family-School  
Relationships**  
in our  
district?



We are looking for  
ten parents to be  
a part of the  
inaugural  
BCSD Family  
Engagement  
Team.

Interested? <https://bit.ly/2Nikndj>

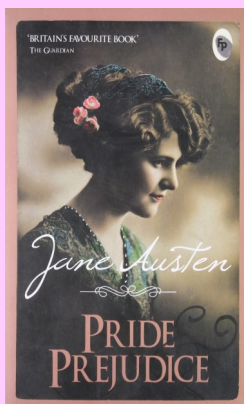
## BMHS FALL PLAY: "Pride and Prejudice"

The BMHS Drama Department is proud to present  
their fall production "Pride and Prejudice" on Friday,

November 16th and Saturday,  
November 17th, at 7:00 P.M.

both evenings in the BMHS Audi-  
torium. Tickets are available at  
the door for \$8.00 for adults and  
\$6.00 for Seniors and Students.

Come enjoy this 1813 romantic  
novel by Jane Austen brought to  
life on the BMHS stage.



## COLLEGE CREDIT PLUS (CCP) PARENT/STUDENT MEETING

The CCP meeting will be held on Monday, December 10th, at 7:00 P.M. in the BMHS Auditorium. This meeting is for any student interested in earning college credit while in high school for the 2019-2020 school year. Attendance at this meeting is **EXPECTED** by the Ohio Department of Education for any interested students and parents.

**CollegeCredit**  
PLUS

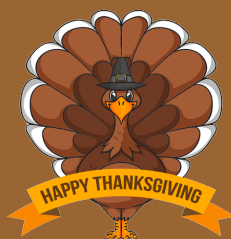
## THANKSGIVING BREAK

No School for Staff or Students

Wednesday through Friday

November 21 to 23

Enjoy the holiday with family  
and friends.



## WINTER BREAK

No School for Staff or Students

Monday, December 24 through  
Friday, January 4

School Resumes Monday,  
January 7, 2019



## FROM THE SUPERINTENDANT, MIKE SHEPPARD

Winter weather has arrived early this year. New for the 2018-19 school year is the addition of a **2-hour delay**. Information regarding this new procedure was included in the [2018-19 District Information Guide](#). This information guide was available at the start of the school year during our open houses and orientations. 2-hour delay information is also included below.

Our district administration, faculty, and staff understand that our decision to delay, open, or close schools during inclement weather has a big effect on families. We also understand that our students are better served – both academically and socially – by being in school. However, our top priority is the safety of our students.

### HOW DO WE MAKE OUR DECISION?

Please understand that we make the decision to delay, keep open, or close the schools in bad weather based on a careful analysis of all relevant factors, such as:

Information on road conditions from transportation staff and from local law enforcement and road crews. We must give careful consideration to the most dangerous roads in the district; they can be treacherous even if your street looks clear;

- Amount of snow and ice accumulated;
- Whether or not the precipitation will continue throughout the day;
- Temperature and wind chills at or below -15F;
- Weather predictions (including those from a weather alert service);
- Storm timing;
- Building conditions (such as whether they have electricity and heat);
- Parking lot conditions.



### TWO-HOUR DELAY - NEW FOR 2018-19

The use of a two-hour delayed school opening may be utilized when the additional two (2) hours would allow for inclement weather to rise to an acceptable level. With the option of the two-hour delay, we will more likely be able to have school and avoid using as many calamity days.

A major part of a two-hour delay school opening involves the transportation of students to schools. Under a two-hour delay schedule, all schools will begin the day two (2) hours later than the regular starting time. The school day will end at the usual time. Students receiving school bus transportation should go to their normal bus stop location two (2) hours later than their regular pick-up time.

As with school closings, the two-hour delay to the start of the school day will be announced through the local media and our telephone message system to parents. If for any reason the two-hour delay is not sufficient to ensure safe travel, the District will close for the entire day. If this is the case, a second call will be made via our telephone messaging service.

### WHO MAKES THE DECISION?

As Superintendent of Schools, I am ultimately responsible for the final decision based on the above factors and recommendations from the Assistant Superintendent in charge of buildings and grounds.

### WHEN IS THE DECISION MADE?

We strive to make the decision to close by 5:30 a.m. or earlier so we can notify our parents via our automated calling system and then the radio and TV stations. Keep in mind that unusual weather conditions may force us to make the decision after this time. In any case, we will notify parents via the automated calling system as the first alert.

### WILL WE CLOSE SCHOOL IF CONDITIONS WORSEN?

Even if the weather conditions worsen, we cannot reverse our decision in the morning without endangering students. Once we make the decision to open the schools, many parents rely on it and leave for work. If we then send students right back home, many will return to unsupervised bus stops and empty houses. If conditions get worse during the school day, we may need to have an early dismissal and will give as much notice as possible to parents. Although we do our absolute best in this process, I know that often no perfect decision exists. If you do not feel that it is safe for your child to get to school, use your best judgment whether or not he or she should attend. If you choose to keep your child at home, his/her absence will be counted as an excused absence. Also, please discourage teenagers from driving in bad conditions and offer them alternatives as weather conditions worsen.

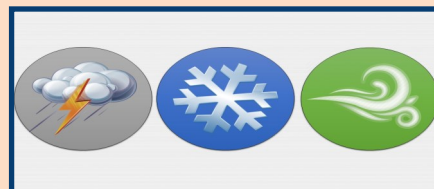
### HOW IS THE PUBLIC NOTIFIED?

As soon as we make the decision to close schools, we will send an automated message via the designated telephone numbers that parents have given us. It is important for families to have correct contact information in their students' Infinite Campus accounts. This will allow the District's automated messaging system to quickly reach you, via phone, email, and text, with school closing information. This will be the quickest and easiest way to learn about school closings. In addition, the Berea City Schools will post the closing on the website [www.berea.k12.oh.us](http://www.berea.k12.oh.us).

For those who use social media, you can follow the district on Twitter @BereaCSD or Facebook/BereaCSD, as we will also post it there. Tune to TV channels ABC, CBS, NBC, WUAB, and/or FOX for up-to-date information on school closings. Do not call the school or bus garage unless it is an emergency.

Thank you,  
Mike Sheppard  
Superintendent

**SEE BMHS TWO HOUR DELAY BELL SCHEDULE  
ON NEXT PAGE ALONG WITH MORE INFORMATION  
ON THE FOLLOWING PAGE**





**BMHS TWO HOUR DELAYED START BELL SCHEDULE** is shown below and will be implemented any day Berea-Midpark High School is placed on a two hour delayed start. All classes will run along with each lunch period following the schedule below. **No** breakfast will be served on two hour delayed start days. Morning buses will run on a two hour delayed start with dismissal buses as regularly scheduled at 2:20.

## **BEREA-MIDPARK HIGH SCHOOL 2-Hour Delayed Start BELL SCHEDULE 2018-2019**



<b>Period</b>	<b>Start</b>	<b>End</b>	<b>Minutes</b>
1	9:20	9:48	28
2	9:52	10:20	28
3	10:24	10:52	28
4(L)	10:56	11:16	20
5(L)	11:20	11:40	20
6(L)	11:44	12:04	20
7(L)	12:08	12:28	20
8(L)	12:32	12:52	20
9(L)	12:56	1:16	20
10	1:20	1:48	28
11	1:52	2:20	28



## Two-Hour Delay Procedures Berea City School District

In accordance with the Berea City School District's Procedures for Emergency School closing, the use of a two-hour delayed school opening may be utilized when the additional two hours would allow for wind chill temperatures to rise to an acceptable level. With the option of the two-hour delay, we will more likely be able to have school and avoid using as many calamity days.

A major part of a two-hour delay school opening involves the transportation of students to schools. Under a two-hour delay schedule, all schools will begin the day two hours later than the regular starting time. The school day will end at the usual time. Students receiving school bus transportation should go to their normal bus stop location two hours later than their regular pick-up time. When the Superintendent calls a two-hour delay, the following *adjustments* will be made:

School	Two-Hour Delay Schedule	Start Time	End Time
Extended Care		Canceled	Same
Preschool a.m.	Canceled	Canceled	Canceled
Preschool p.m.		Regular Schedule	Regular Schedule
Elementary	Kindergarten – Fourth Grade	11:00 a.m.	3:45 p.m.
Middle School	Grades Fifth – Eighth	10:00 a.m.	3:00 p.m.
High School	Grades Ninth – Twelfth	9:20 a.m.	2:20 p.m.
Polaris Career Center (if open)	Morning Classes Afternoon Classes	Canceled Regular Schedule	Canceled Regular Schedule
Non-Public School Students (if open)	All Applicable Students	Pick-up Two Hours Late	Regular Schedule
Out-of-District Placements (if open)	All Applicable Students	Pick-up Two Hours Late	Regular Schedule

School Services	Two-Hour Delay Schedule
Field Trips	Canceled
Breakfast Program	Not Served
Lunch Program	Served
Before School Activities/Programs	Canceled
After School Activities/Programs	Proceed as Scheduled Unless Otherwise Notified
Extended Care	Morning Canceled; Afternoon Schedule As Usual
Student Detentions	Morning Canceled and Rescheduled; Afternoon Scheduled as Usual
Child Care Centers	Morning Transportation Two-Hour Delayed; Afternoon Schedule as Usual

As with school closings, the two-hour delay to the start of the school day will be announced through the local media and our telephone message system to parents. If for any reason the two-hour delay is not sufficient to ensure safe travel, the District will close for the entire day. If this is the case, a second call will be made via our telephone messaging service.

Revised: November 15, 2018

## STUDENT PARKING REGULATIONS

With our increased enrollment and the challenges posed by our construction, we are grateful for the patience and cooperation that our students, parents, and staff have demonstrated during the busy times of arrival and dismissal. In order to best assure safe and effective student drop-off and pick-up, we ask that you comply with each of these expectations:

- Only students with valid parking tags, for either BMHS or Roehm Athletic Complex, may park in the designated spaces of their assigned lots. Cars without valid parking tags are subject to being towed unannounced.
- Student pedestrian crossing of streets is permitted only in the the designated cross-walk areas.
- Buses only are permitted in the designated "flag pole" lot area directly in front of the building, during student arrival and dismissal times.
- Drop-off & pick-up of students is permitted only in the designated school parking lot area – not on the streets of Bagley, Eastland, or Maple.
- Vehicles which are entering & exiting the lot may do so only through the designated areas and following the indicated traffic flow.

If you should have any questions or concerns, you are welcomed to contact our Main Office 216-898-8900. Thank you for your continued cooperation!

**PARKING RULES  
ENFORCED**

**IMPROPERLY  
PARKED VEHICLES  
WILL BE TOWED  
AT OWNER'S  
EXPENSE**

## DEPARTMENT HIGHLIGHTS: ATHLETICS

The Fall Athletic Season is quickly drawing to a close. Here are just a few of the highlights for each sport.

**Boys Cross Country** – The boys improved over the season, beginning the year 8th at the SWC Preview and finishing the SWC Championship in 6th place. Senior Ethan Bradt qualified for the OHSAA Regional Meet with his 6th place finish at the OHSAA District Meet.

**Girls Cross Country** – The girls also improved over the season by the SWC Championship Meet, taking fourth in the conference championship. The team qualified for the OHSAA Regional Meet this season with their fourth place finish at the OHSAA District Meet.

**Football** – The football team concluded the season with a (5-4) record this year.

**Golf** – The young Titans golf teams continue to grow their programs as several freshmen and sophomores attempted to learn the game and improve their skills on the course.

**Boys Soccer** – The boys' soccer team finished third in the conference with a record of 8-6-2 on the year. The team went on an impressive six game unbeaten streak on the season.

**Girls Soccer** – Under the direction of new Head Coach, Abbey Golden, the girls' soccer team finished the regular season with a 10 -3-3 record and fifth in the conference. The team was Sectional Champions and reached the OHSAA District Finals.

**Girls Tennis** – The Lady Titans tennis program continues to grow, and it showed this year in the SWC Tournament where doubles team, Ali Lash and Zoe Treher, finished fifth overall in the tournament.

**Volleyball** – The Titans finished sixth in the conference with their record of 8 and 12 on the season.

**CONGRATULATIONS TO ALL OF THE FALL ATHLETES FOR A GREAT SEASON!**



## FROM THE CLINIC: THANKSGIVING SERVING SIZES



THE UNIVERSITY OF TEXAS  
**MD Anderson**  
**Cancer Center**  
Making Cancer History®

### Serving Size Cheat Sheet

Select healthy portions of your favorite Thanksgiving foods.

Men: 700 calories per meal

Women: 500 calories per meal

Add up your selections to stay in your target calorie range.

Fill half your plate with non-starchy vegetables and the other half with healthy holiday food portions.

**Salad**  
Serving size: 1 cup  
about the size of a baseball  
Calories: about 100-150, depending on the dressing

**Turkey**  
Serving size: 3 ounces  
about the size of 1 deck of cards  
Calories: about 132 (white meat)

**Gravy**  
Serving size: ¼ cup  
about the size of a golf ball  
Calories: about 30-50

**Potatoes**  
Serving size: ½ cup  
about the size of a tennis ball cut in half  
Calories: about 145

**Stuffing**  
Serving size: ½ cup  
about the size of a standard ice cream scoop  
Calories: about 180 calories

**Cornbread**  
Serving size: 1 medium muffin or square  
about the size of a bar of soap  
Calories: about 175 without butter

**Butter or margarine**  
Serving size: 1 teaspoon  
about the size of 1 die  
Calories: about 36

**Cranberry sauce**  
Serving size: ¼ cup  
about the size of a golf ball  
Calories: about 105

**Pie**  
Serving size: 1/8 of 9" pie  
about the size of a standard light bulb  
Calories: about 323 for pumpkin, 456 for pecan

Get more healthy eating tips at  
[mdanderson.org/food](http://mdanderson.org/food)

## PRIDE PRESENTS "MIX IT UP DAY"

PRIDE is hosting their annual "Mix It Up Day" on Tuesday, November 20th. This is a national program which encourages students to get to know someone new and thereby tear down barriers which divided students, such as social groups, race, ethnicity, sex or gender, religion, etc. Students from PRIDE, JSA and AVID will be partnered with other students and go to each other's classes during the school day and meet back together as a group during eleventh period. Sign-ups are going on now. See Mrs. Fox for more details.



## BMHS HOLIDAY MUSIC CONCERTS

All concerts are in the BMHS Auditorium and begin at 7:00 P.M. Join them for an evening of holiday music as follows:

Orchestra Concert: Tuesday, December 11th

Band Concert: Thursday, December 13th

Choir Concert: Tuesday, December 18th



## NATIONAL HONOR SOCIETY DODGE BALL NIGHT

NHS will host the 3rd Annual Dodge Ball Night on Friday, November 30th at 7:00 P.M. at BMHS. The proceeds will benefit Autism Awareness. Team registration forms will be available in the Main Office Monday, November 12th. The registration fee per team is \$30. All forms need to be returned by November 28th. There will be raffle prizes, t-shirts and concessions at the event. General admission is \$5.00 at the door to watch the teams dodge, duck, dip, dive and dodge to help raise money for Autism Awareness here at BMHS.



## BMHS YEARBOOKS FOR 2019

Make sure to order your 2019 yearbook NOW! It is at its lowest price. Click here to order: [DIRECT LINK TO ORDER](#) or obtain a mail-in order form in the Main Office, Activities Office or Room 155.

Senior parents you may purchase an ad in the 2019 yearbook by clicking on this link: [SENIOR AD](#)





## FALL SPORTS AWARDS

Monday, November 19th

6:30 P.M.

BMHS Auditorium

All fall athletes and their families are invited.



### PTSA

Please consider joining PTSA to help a little or a lot. Every membership counts and helps us achieve our goals for the year. You can join online too! <https://my.cheddarup.com/c/berea-midpark-high-school-ptsa>



Mark your calendar for November 20th, 7 P.M. in the school library for the next PTSA meeting of the year.

*Schedule Change*

### FIRST TWO WEEKS OF DECEMBER

#### STUDENT SCHEDULE

#### FOR END OF COURSE EXAM RETAKES

Below is the End of Course Exam Schedule for the retakes and make-ups and the dates on which they are scheduled for each day. Each day, December 3rd to 11th, is a regular bell schedule and all classes will be in session. Students who need to retake a particular exam are expected to arrive promptly on those days to their assigned testing rooms to retake their exams. Only those students who need to retake an End of Course Exam from last year are affected by this schedule. All other students are to follow their normal daily class schedules.

MON	TUE	WED	THU	FRI
3 <b>English Language Arts 1</b> 10 <sup>th</sup> gr. AM  <b>English Language Arts 2</b> 11 <sup>th</sup> gr. AM & PM	4 <b>Government</b> 12 <sup>th</sup> gr. AM & PM  <b>Geometry</b> 11 <sup>th</sup> gr. AM & PM	5 <b>Algebra 1</b> 10 <sup>th</sup> gr. AM  <b>US History</b> 11 <sup>th</sup> gr. AM & PM	6 <b>Biology</b> 11 <sup>th</sup> gr. AM & PM  <b>English Language Arts 2</b> 12 <sup>th</sup> gr. AM & PM	7 <b>English Language Arts 1</b> 11 <sup>th</sup> & 12 <sup>th</sup> gr. AM & PM  <b>MAKEUPS</b> AM & PM
10 <b>MAKEUPS</b> AM & PM	11 <b>MAKEUPS</b> AM & PM			

Seniors will be scheduled for other tests needed on Friday, December 7, Monday, December 10 and Tuesday, December 11. December 12, 13 and 14 as needed.

## TRAVEL THE WORLD

The Berea City School District offers trips, which are not connected to specific classes, for BMHS high school students. Middle School students may sign up early for a savings benefit.

Check out the available trips at : <https://sites.google.com/bereaschools.org/bcsd-travel-opportunities/home>

Once you have signed up, the cost of the trip is locked in. The cost increases \$50-\$100 every six months so the sooner your student signs up, the cheaper the cost.

If you sign up two years in advance, you get a \$200 discount from most of the companies (see website). This makes monthly payments much more attainable. There are also a variety of fundraising options available.

If you need to cancel, each company has a refund schedule along with added insurance options.

**2019: China**, Chaperone is Mrs. Hsu, and **Biomedical Europe**, Chaperone is Mr. Pittman, are still taking travelers. Deadline is February however, no discounts at this point.

**2020: Peru**, Chaperone is Mrs. Pinter, **Paris/London/Rome**, Chaperone is Mr. Soos, and **Sustainable Living/Germany**, Chaperone is Mr. McElyea, are open for enrollment. Discount of \$200 if enrolled by December 31, 2018.

**2021: Ecology Galapagos Islands**, Chaperone **Mrs. Draves and Mr. Blatnica**, **S. Germany/Austria/Switzerland**, Chaperone is Mrs. Lyon, and **Mexico Service**, two years of Spanish is required and the Chaperone is Mrs. Martin, are all open for enrollment. Discounts of are \$200 available if enrolled by December 31, 2019. Help us know if you are planning to travel, by signing up early, and locking in your price!

Contact [dlyon@bereaschools.org](mailto:dlyon@bereaschools.org) or the chaperone as shown, if you have any questions.

Bon Voyage!



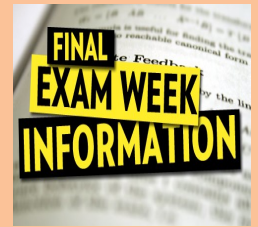
## OML TESTS

Ohio Math League Tests will be given this year after school in the students' Math classroom at 2:20. The remaining dates for OML this year are December 11, January 8, February 12, and March 19. Your student should see their Math teacher for details.



## FIRST SEMESTER FINAL EXAM SCHEDULE

BMHS will conduct First Semester Final Exams on Wednesday, December 19, Thursday, December 20, and Friday, December 21st. Please see the schedule below of the dates and times the exams will be administered. All students are expected to take final exams during the times as indicated. Students who ride the bus will be transported home at 12:55 on Wednesday and Thursday. On Friday, students who ride the bus will be transported home at 11:00.



# Berea-Midpark High School

## First Semester Exam Schedule 2018-2019



<b>FIRST SEMESTER FINALS</b>	<b>WED. Dec. 19</b>	<b>THU. Dec. 20</b>	<b>FRI. Dec. 21</b>
<b>Session 1 7:30 – 9:05</b>	<b>1<sup>o</sup></b>	<b>2<sup>o</sup></b>	<b>3<sup>o</sup></b>
<b>Session 2 9:25 – 11:00</b>	<b>4/5<sup>o</sup> 5/6<sup>o</sup></b>	<b>7/8<sup>o</sup> 8/9<sup>o</sup></b>	<b>6/7<sup>o</sup></b>
<b>Session 3 11:20 – 12:55</b>	<b>10<sup>o</sup></b>	<b>11<sup>o</sup></b>	<b>Make-Up Exams</b>

- This schedule allows for 20 minute breaks between each test session.

## SIGN UP for REMIND text messages

BMHS will now make use of a parent/student text messaging system to directly and promptly notify you of important communications and/or emergency like circumstances. You will receive messages only from the **REMIND** system as communicated by administration. No others will have access to your phone number or be able to send group messages. Please enroll yourself to receive these group text messages. To enroll see the information below.

# EMERGENCY



## Sign up for important updates from BMHS Administrator.

Get information for Berea-Midpark High School right on your phone—not on handouts.

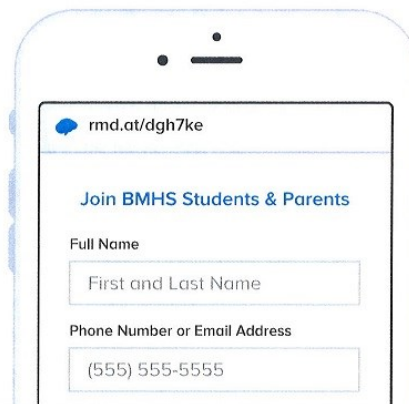
Pick a way to receive messages for **BMHS Students & Parents**:

- A** If you have a smartphone, get push notifications.

On your iPhone or Android phone, open your web browser and go to the following link:

[rmd.at/dgh7ke](https://rmd.at/dgh7ke)

Follow the instructions to sign up for Remind. You'll be prompted to download the mobile app.



- B** If you don't have a smartphone, get text notifications.

Text the message [@dgh7ke](https://t.me/dgh7ke) to the number **81010**.

If you're having trouble with **81010**, try texting [@dgh7ke](https://t.me/dgh7ke) to **(440) 332-4705**.

\* Standard text message rates apply.



Don't have a mobile phone? Go to [rmd.at/dgh7ke](https://rmd.at/dgh7ke) on a desktop computer to sign up for email notifications.



Support Our Students!



Our School ID #

**2056**

**GIANT EAGLE** Apples for the Students

Each scan of the Giant Eagle Advantage Card® earns funds for our schools educational needs!




CLICK HERE TO REGISTER

Do you shop at Giant Eagle? Then you can sign up to earn cash for our school. All you need is your Giant Eagle Advantage card.

Sponsored by the Safer Schools Ohio, Ohio Department of Public Safety, and the Ohio Department of Education, you can anonymously report anything that is suspicious or endangering you, your friends, or your school.

**SPEAK UP SAVE LIVES**  
Your eyes and ears could save lives!  
Text or Call  
**844-SaferOH**  
**844-723-3764**

**SPEAK UP** **STAND UP**  
**SAVE A LIFE**   
#CareEnough

**Got Used Markers? ColorCycle it!**



**THERE ARE DROP BOXES LOCATED IN THE BEREA-MIDPARK HIGH SCHOOL MAIN OFFICE IN WHICH TO PLACE YOUR USED MARKERS. THANK YOU!**

For more information visit [www.crayola.com/colorcycle](http://www.crayola.com/colorcycle)

**SUPPORTING LOCAL SCHOOLS**

*Teaming Up For Education*



**YOU SHOP.  
WE GIVE.**

When you use your Heinen's Tasteful Rewards™ Card throughout the school year, Heinen's will donate up to 1% of your purchases to a school of your choice.

**WAYS TO SIGN UP**

- Online at [heinens.com/schools](http://heinens.com/schools)
- In-store at the Customer Service Desk
- Call our Customer Relations Department at 1-855-475-2500 ext 2337

**heinen's**  
GROCERY STORE ©2010 Heinen's, Inc.

*Be sure to reselect your school every year!*